



VIVID AT

HUXLEY COURT

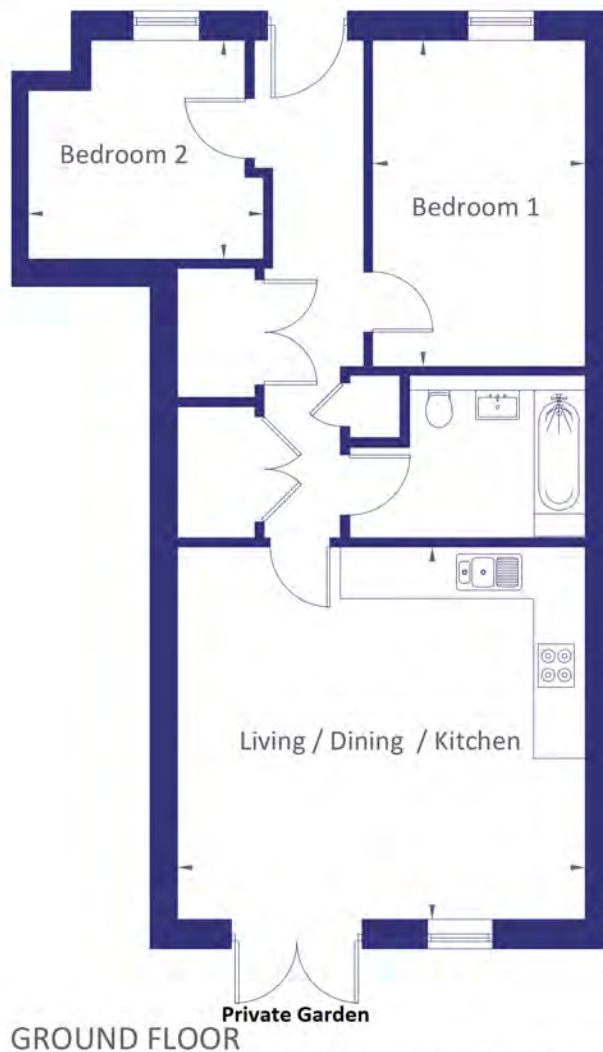
NEW ALRESFORD, HAMPSHIRE

VIVID

Huxley Court

New Alresford

Plot 20
2 Bedroom Apartment



GROUND FLOOR

Living / Dining / Kitchen
5.63m [18'-6"] x 5.14m [16'-10"]

Bedroom 1
4.50m [14'-9"] x 2.93m [9'-7"]

Bedroom 2
3.25m [10'-8"] x 3.02m [9'-11"]



Backed by
HM Government

www.yourvividhome.co.uk
@WeAreVIVIDsales

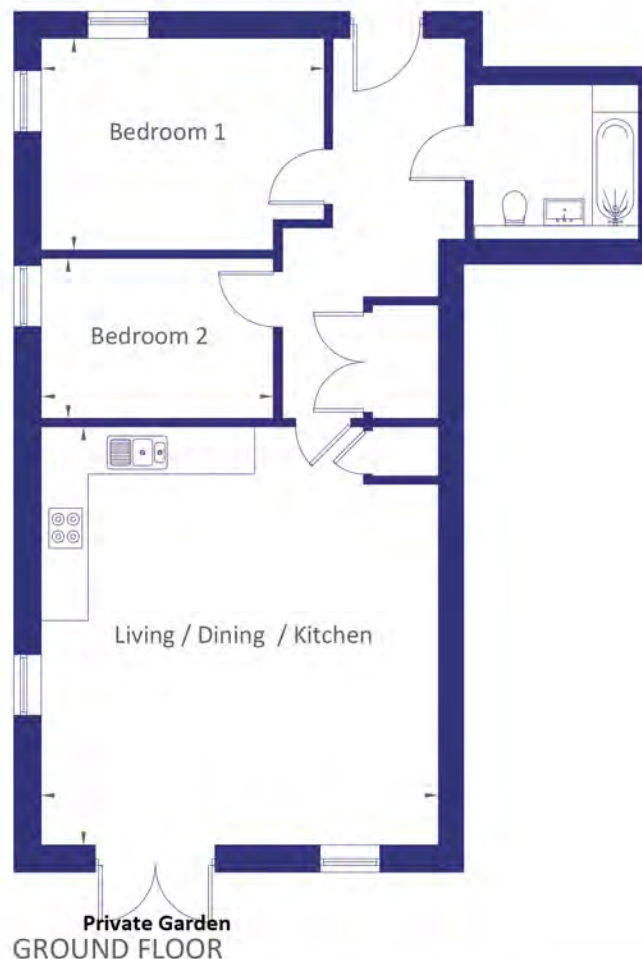


Please note floorplans are not to scale and are indicative only, total areas are provided as gross internal areas and are subject to variance and these plans do not act as part of a legally binding contract, warranty or guarantee. These plans may not be to scale and dimensions may vary during the build programme. It is common for fixtures and fittings to change during the build programme, for example boilers. Location of windows, doors, kitchen units and appliances may differ. Doors may swing in to the opposite direction to that shown on selected houses. Dimensions, which are taken from the indicated points of measurement are for guidance only and are not intended to be used to calculate the space needed for specific pieces of furniture. If your home is set within a terrace row, the position of the windows may vary from those shown on this plan. The property may also be a handed (mirrored) version of the layout shown here. We advise that you do not order any furniture based on these indicative plans, please wait until you can measure up fully, inside the property. Please speak to a member of our sales team about when you can gain access to take measurements. We will not be responsible for costs incurred due to ordering incorrect furniture. VIVID Housing Limited is registered in England and Wales as a registered society under the Co-operative and Community Benefit Societies Act 2014 under number 7544 with exempt charity status and as a registered provider of social housing with the Homes and Communities Agency under number 4850. Our registered office is at Peninsular House, Wharf Road, Portsmouth, Hampshire, PO2 8HB. All information correct at time of creation – October 2021.

Huxley Court

New Alresford

Plot 22
2 Bedroom Apartment



GROUND FLOOR

Living / Dining / Kitchen
6.29m [20'-8"] x 5.98m [19'-7"]

Bedroom 1
4.25m [13'-11"] x 3.18m [10'-5"]

Bedroom 2
3.49m [11'-2"] x 3.18m [10'-8"]



Backed by
HM Government

www.yourvividhome.co.uk
@WeAreVIVIDsales

VIVID

Please note floorplans are not to scale and are indicative only, total areas are provided as gross internal areas and are subject to variance and these plans do not act as part of a legally binding contract, warranty or guarantee. These plans may not be to scale and dimensions may vary during the build programme. It is common for fixtures and fittings to change during the build programme, for example boilers. Location of windows, doors, kitchen units and appliances may differ. Doors may swing in to the opposite direction to that shown on selected houses. Dimensions, which are taken from the indicated points of measurement are for guidance only and are not intended to be used to calculate the space needed for specific pieces of furniture. If your home is set within a terrace row, the position of the windows may vary from those shown on this plan. The property may also be a handed (mirrored) version of the layout shown here. We advise that you do not order any furniture based on these indicative plans, please wait until you can measure up fully, inside the property. Please speak to a member of our sales team about when you can gain access to take measurements. We will not be responsible for costs incurred due to ordering incorrect furniture. VIVID Housing Limited is registered in England and Wales as a registered society under the Co-operative and Community Benefit Societies Act 2014 under number 7544 with exempt charity status and as a registered provider of social housing with the Homes and Communities Agency under number 4850. Our registered office is at Peninsular House, Wharf Road, Portsmouth, Hampshire, PO2 8HB. All information correct at time of creation – October 2021.

Huxley Court

New Alresford



Backed by
HM Government

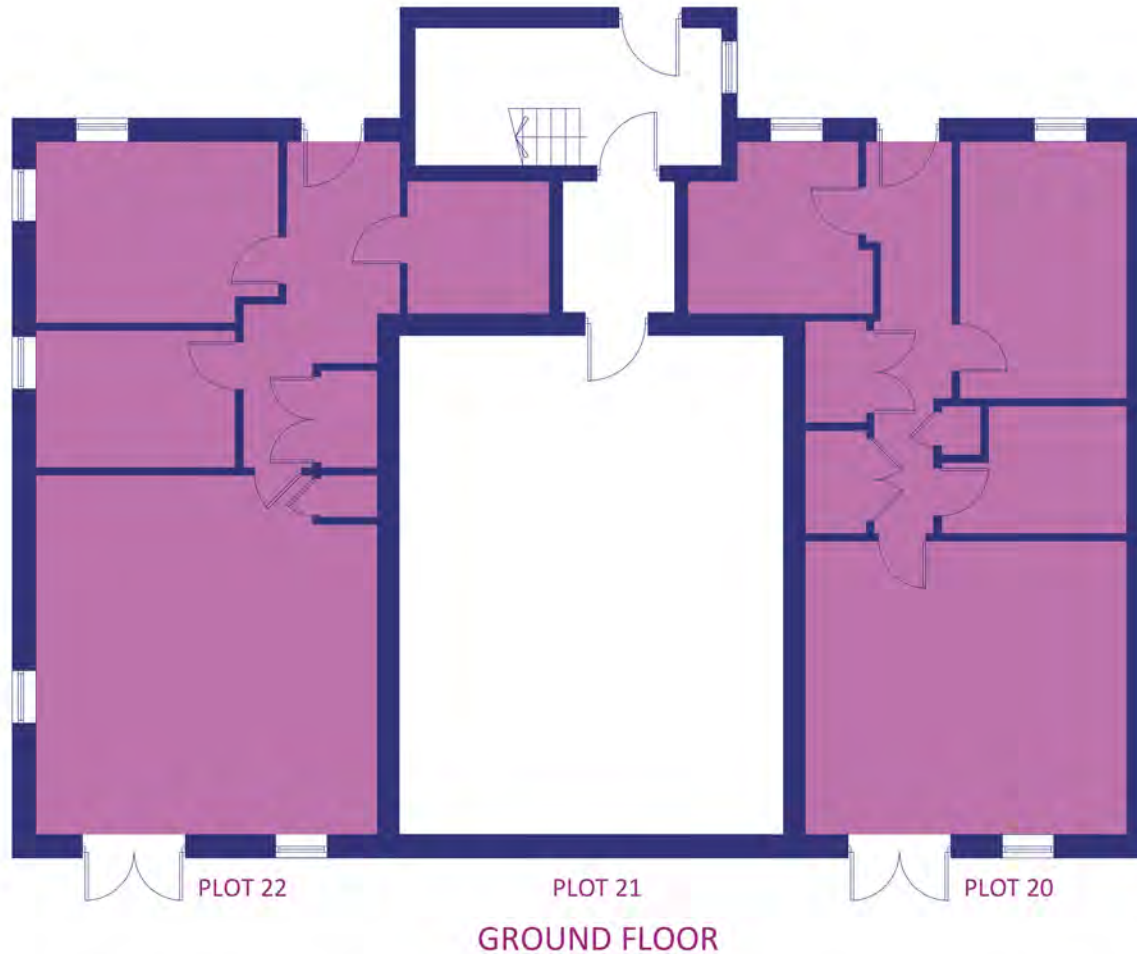
www.yourvividhome.co.uk
@WeAreVIVIDsales

Please note floorplans are not to scale and are indicative only, total areas are provided as gross internal areas and are subject to variance and these plans do not act as part of a legally binding contract, warranty or guarantee. These plans may not be to scale and dimensions may vary during the build programme. It is common for fixtures and fittings to change during the build programme, for example boilers. Location of windows, doors, kitchen units and appliances may differ. Doors may swing in to the opposite direction to that shown on selected houses. Dimensions, which are taken from the indicated points of measurement are for guidance only and are not intended to be used to calculate the space needed for specific pieces of furniture. If your home is set within a terrace row, the position of the windows may vary from those shown on this plan. The property may also be a handed (mirrored) version of the layout shown here. We advise that you do not order any furniture based on these indicative plans, please wait until you can measure up fully, inside the property. Please speak to a member of our sales team about when you can gain access to take measurements. We will not be responsible for costs incurred due to ordering incorrect furniture. VIVID Housing Limited is registered in England and Wales as a registered society under the Co-operative and Community Benefit Societies Act 2014 under number 7544 with exempt charity status and as a registered provider of social housing with the Homes and Communities Agency under number 4850. Our registered office is at Peninsular House, Wharf Road, Portsmouth, Hampshire, PO2 8HB. All information correct at time of creation – October 2021.

VIVID

Huxley Court

New Alresford



Backed by
HM Government

www.yourvividhome.co.uk
@WeAreVIVIDsales

Please note floorplans are not to scale and are indicative only, total areas are provided as gross internal areas and are subject to variance and these plans do not act as part of a legally binding contract, warranty or guarantee. These plans may not be to scale and dimensions may vary during the build programme. It is common for fixtures and fittings to change during the build programme, for example boilers. Location of windows, doors, kitchen units and appliances may differ. Doors may swing in to the opposite direction to that shown on selected houses. Dimensions, which are taken from the indicated points of measurement are for guidance only and are not intended to be used to calculate the space needed for specific pieces of furniture. If your home is set within a terrace row, the position of the windows may vary from those shown on this plan. The property may also be a handed (mirrored) version of the layout shown here. We advise that you do not order any furniture based on these indicative plans, please wait until you can measure up fully, inside the property. Please speak to a member of our sales team about when you can gain access to take measurements. We will not be responsible for costs incurred due to ordering incorrect furniture. VIVID Housing Limited is registered in England and Wales as a registered society under the Co-operative and Community Benefit Societies Act 2014 under number 7544 with exempt charity status and as a registered provider of social housing with the Homes and Communities Agency under number 4850. Our registered office is at Peninsular House, Wharf Road, Portsmouth, Hampshire, PO2 8HB. All information correct at time of creation – October 2021.

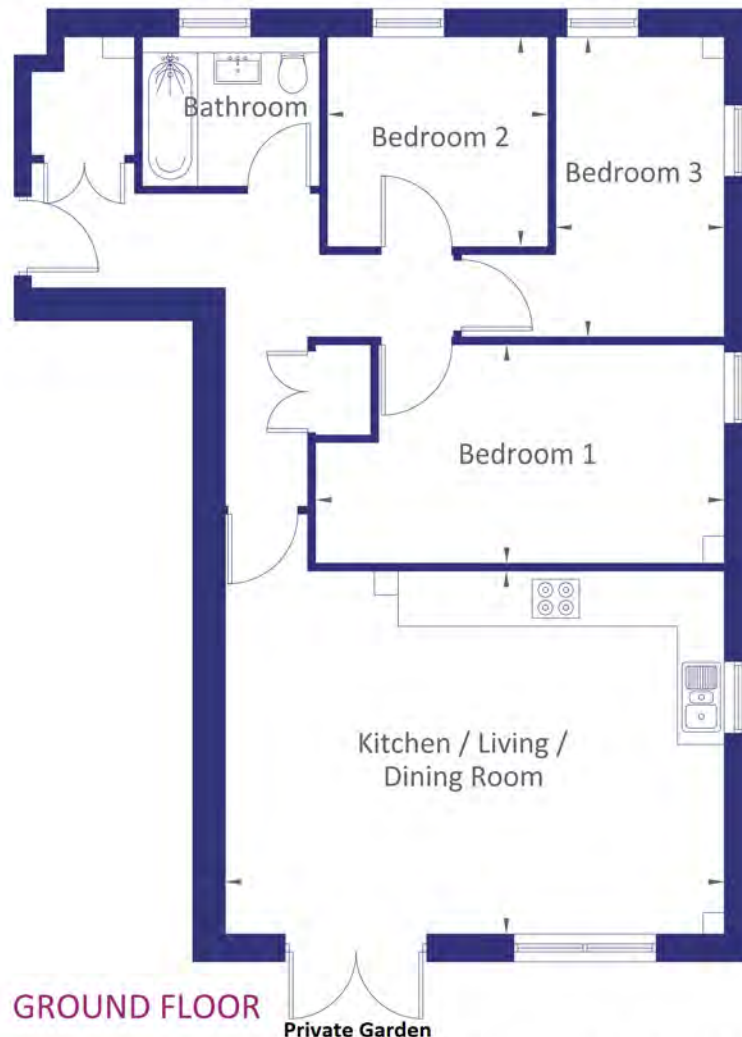
VIVID

Huxley Court

New Alresford

Plot 29

3 Bedroom Apartment



GROUND FLOOR

Kitchen / Living / Dining Room
6.37m [20'-11"] x 4.63m [15'-2"]

Bedroom 1
5.22m [17'-2"] x 2.78m [9'-1"]

Bedroom 2
2.81m [9'-3"] x 2.68m [8'-9"]

Bedroom 3
3.83m [12'-7"] x 2.15m [7'-1"]



Backed by
HM Government

www.yourvividhome.co.uk
@WeAreVIVIDsales

VIVID

Please note floorplans are not to scale and are indicative only, total areas are provided as gross internal areas and are subject to variance and these plans do not act as part of a legally binding contract, warranty or guarantee. These plans may not be to scale and dimensions may vary during the build programme. It is common for fixtures and fittings to change during the build programme, for example boilers. Location of windows, doors, kitchen units and appliances may differ. Doors may swing in to the opposite direction to that shown on selected houses. Dimensions, which are taken from the indicated points of measurement are for guidance only and are not intended to be used to calculate the space needed for specific pieces of furniture. If your home is set within a terrace row, the position of the windows may vary from those shown on this plan. The property may also be a handed (mirrored) version of the layout shown here. We advise that you do not order any furniture based on these indicative plans, please wait until you can measure up fully, inside the property. Please speak to a member of our sales team about when you can gain access to take measurements. We will not be responsible for costs incurred due to ordering incorrect furniture. VIVID Housing Limited is registered in England and Wales as a registered society under the Co-operative and Community Benefit Societies Act 2014 under number 7544 with exempt charity status and as a registered provider of social housing with the Homes and Communities Agency under number 4850. Our registered office is at Peninsular House, Wharf Road, Portsmouth, Hampshire, PO2 8HB. All information correct at time of creation – September 2021.

Huxley Court

New Alresford

Plot 30

2 Bedroom Apartment



GROUND FLOOR

GROUND FLOOR

Kitchen / Living / Dining Room
7.81m [25'-8"] x 4.47m [14'-8"]

Bedroom 1
5.78m [19'] x 2.75m [9']

Bedroom 2
3.70m [12'-2"] x 2.15m [7'-1"]



Backed by
HM Government

www.yourvividhome.co.uk
@WeAreVIVIDsales



Please note floorplans are not to scale and are indicative only, total areas are provided as gross internal areas and are subject to variance and these plans do not act as part of a legally binding contract, warranty or guarantee. These plans may not be to scale and dimensions may vary during the build programme. It is common for fixtures and fittings to change during the build programme, for example boilers. Location of windows, doors, kitchen units and appliances may differ. Doors may swing in to the opposite direction to that shown on selected houses. Dimensions, which are taken from the indicated points of measurement are for guidance only and are not intended to be used to calculate the space needed for specific pieces of furniture. If your home is set within a terrace row, the position of the windows may vary from those shown on this plan. The property may also be a handed (mirrored) version of the layout shown here. We advise that you do not order any furniture based on these indicative plans, please wait until you can measure up fully, inside the property. Please speak to a member of our sales team about when you can gain access to take measurements. We will not be responsible for costs incurred due to ordering incorrect furniture. VIVID Housing Limited is registered in England and Wales as a registered society under the Co-operative and Community Benefit Societies Act 2014 under number 7544 with exempt charity status and as a registered provider of social housing with the Homes and Communities Agency under number 4850. Our registered office is at Peninsular House, Wharf Road, Portsmouth, Hampshire, PO2 8HB. All information correct at time of creation – September 2021.

Huxley Court

New Alresford

Plot 31

3 Bedroom Apartment



GROUND FLOOR

Kitchen / Living / Dining Room
6.37m [20'-11"] x 4.63m [15'-2"]

Bedroom 1
5.22m [17'-2"] x 2.78m [9'-1"]

Bedroom 2
2.81m [9'-3"] x 2.68m [8'-9"]

Bedroom 3
3.83m [12'-7"] x 2.15m [7'-1"]



Backed by
HM Government

www.yourvividhome.co.uk

@WeAreVIVIDsales

VIVID

Please note floorplans are not to scale and are indicative only, total areas are provided as gross internal areas and are subject to variance and these plans do not act as part of a legally binding contract, warranty or guarantee. These plans may not be to scale and dimensions may vary during the build programme. It is common for fixtures and fittings to change during the build programme, for example boilers. Location of windows, doors, kitchen units and appliances may differ. Doors may swing in to the opposite direction to that shown on selected houses. Dimensions, which are taken from the indicated points of measurement are for guidance only and are not intended to be used to calculate the space needed for specific pieces of furniture. If your home is set within a terrace row, the position of the windows may vary from those shown on this plan. The property may also be a handed (mirrored) version of the layout shown here. We advise that you do not order any furniture based on these indicative plans, please wait until you can measure up fully, inside the property. Please speak to a member of our sales team about when you can gain access to take measurements. We will not be responsible for costs incurred due to ordering incorrect furniture. VIVID Housing Limited is registered in England and Wales as a registered society under the Co-operative and Community Benefit Societies Act 2014 under number 7544 with exempt charity status and as a registered provider of social housing with the Homes and Communities Agency under number 4850. Our registered office is at Peninsular House, Wharf Road, Portsmouth, Hampshire, PO2 8HB. All information correct at time of creation – September 2021.

Huxley Court

New Alresford

Plot 32

3 Bedroom Apartment



FIRST FLOOR

Kitchen / Living / Dining Room
6.37m [20'-11"] x 4.63m [15'-2"]

Bedroom 1
5.22m [17'-2"] x 2.78m [9'-1"]

Bedroom 2
2.81m [9'-3"] x 2.68m [8'-9"]

Bedroom 3
3.83m [12'-7"] x 2.15m [7'-1"]



Backed by
HM Government

www.yourvividhome.co.uk
@WeAreVIVIDsales

VIVID

Please note floorplans are not to scale and are indicative only, total areas are provided as gross internal areas and are subject to variance and these plans do not act as part of a legally binding contract, warranty or guarantee. These plans may not be to scale and dimensions may vary during the build programme. It is common for fixtures and fittings to change during the build programme, for example boilers. Location of windows, doors, kitchen units and appliances may differ. Doors may swing in to the opposite direction to that shown on selected houses. Dimensions, which are taken from the indicated points of measurement are for guidance only and are not intended to be used to calculate the space needed for specific pieces of furniture. If your home is set within a terrace row, the position of the windows may vary from those shown on this plan. The property may also be a handed (mirrored) version of the layout shown here. We advise that you do not order any furniture based on these indicative plans, please wait until you can measure up fully, inside the property. Please speak to a member of our sales team about when you can gain access to take measurements. We will not be responsible for costs incurred due to ordering incorrect furniture. VIVID Housing Limited is registered in England and Wales as a registered society under the Co-operative and Community Benefit Societies Act 2014 under number 7544 with exempt charity status and as a registered provider of social housing with the Homes and Communities Agency under number 4850. Our registered office is at Peninsular House, Wharf Road, Portsmouth, Hampshire, PO2 8HB. All information correct at time of creation – September 2021.

Huxley Court

New Alresford

Plot 33

2 Bedroom Apartment



FIRST FLOOR

Kitchen / Living / Dining Room
7.81m [25'-8"] x 4.47m [14'-8"]

Bedroom 1
5.78m [19'] x 2.75m [9']

Bedroom 2
3.70m [12'-2"] x 2.15m [7'-1"]



Backed by
HM Government

FIRST FLOOR

www.yourvividhome.co.uk

@WeAreVIVIDsales

Please note floorplans are not to scale and are indicative only, total areas are provided as gross internal areas and are subject to variance and these plans do not act as part of a legally binding contract, warranty or guarantee. These plans may not be to scale and dimensions may vary during the build programme. It is common for fixtures and fittings to change during the build programme, for example boilers. Location of windows, doors, kitchen units and appliances may differ. Doors may swing in to the opposite direction to that shown on selected houses. Dimensions, which are taken from the indicated points of measurement are for guidance only and are not intended to be used to calculate the space needed for specific pieces of furniture. If your home is set within a terrace row, the position of the windows may vary from those shown on this plan. The property may also be a handed (mirrored) version of the layout shown here. We advise that you do not order any furniture based on these indicative plans, please wait until you can measure up fully, inside the property. Please speak to a member of our sales team about when you can gain access to take measurements. We will not be responsible for costs incurred due to ordering incorrect furniture. VIVID Housing Limited is registered in England and Wales as a registered society under the Co-operative and Community Benefit Societies Act 2014 under number 7544 with exempt charity status and as a registered provider of social housing with the Homes and Communities Agency under number 4850. Our registered office is at Peninsular House, Wharf Road, Portsmouth, Hampshire, PO2 8HB. All information correct at time of creation – September 2021.

Huxley Court

New Alresford

Plot 34

3 Bedroom Apartment



GROUND FLOOR

Kitchen / Living / Dining Room
6.37m [20'-11"] x 4.63m [15'-2"]

Bedroom 1
5.22m [17'-2"] x 2.78m [9'-1"]

Bedroom 2
2.81m [9'-3"] x 2.68m [8'-9"]

Bedroom 3
3.83m [12'-7"] x 2.15m [7'-1"]



Backed by
HM Government

www.yourvividhome.co.uk
@WeAreVIVIDsales



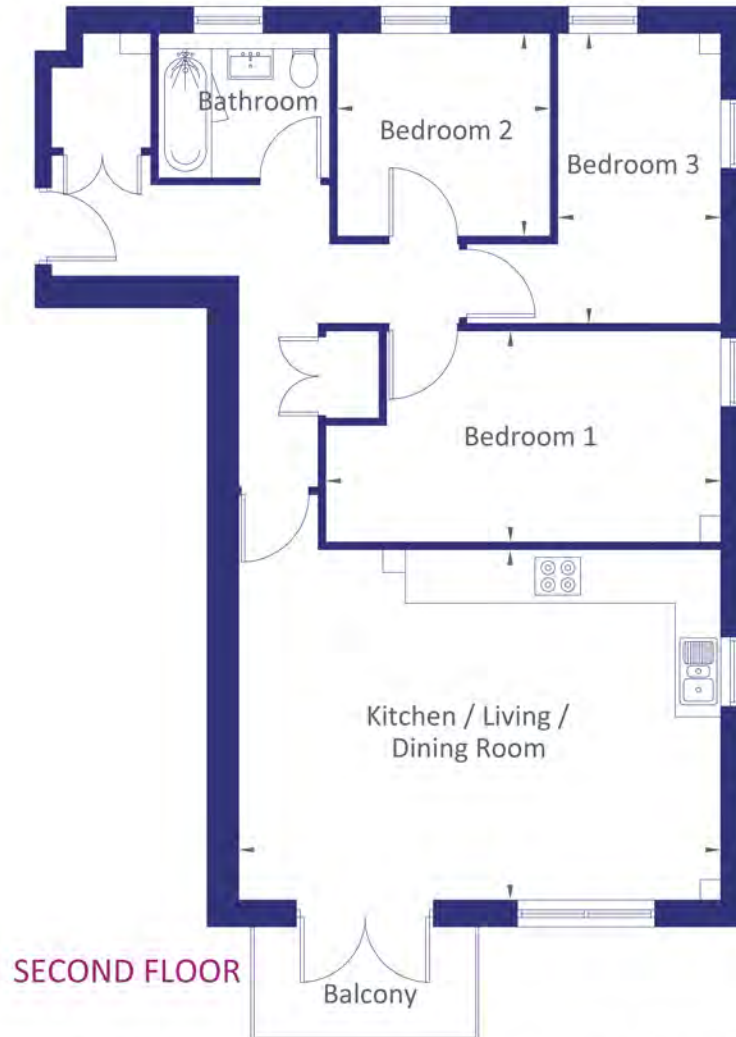
Please note floorplans are not to scale and are indicative only, total areas are provided as gross internal areas and are subject to variance and these plans do not act as part of a legally binding contract, warranty or guarantee. These plans may not be to scale and dimensions may vary during the build programme. It is common for fixtures and fittings to change during the build programme, for example boilers. Location of windows, doors, kitchen units and appliances may differ. Doors may swing in to the opposite direction to that shown on selected houses. Dimensions, which are taken from the indicated points of measurement are for guidance only and are not intended to be used to calculate the space needed for specific pieces of furniture. If your home is set within a terrace row, the position of the windows may vary from those shown on this plan. The property may also be a handed (mirrored) version of the layout shown here. We advise that you do not order any furniture based on these indicative plans, please wait until you can measure up fully, inside the property. Please speak to a member of our sales team about when you can gain access to take measurements. We will not be responsible for costs incurred due to ordering incorrect furniture. VIVID Housing Limited is registered in England and Wales as a registered society under the Co-operative and Community Benefit Societies Act 2014 under number 7544 with exempt charity status and as a registered provider of social housing with the Homes and Communities Agency under number 4850. Our registered office is at Peninsular House, Wharf Road, Portsmouth, Hampshire, PO2 8HB. All information correct at time of creation – September 2021.

Huxley Court

New Alresford

Plot 35

3 Bedroom Apartment



SECOND FLOOR

Kitchen / Living / Dining Room
6.37m [20'-11"] x 4.63m [15'-2"]

Bedroom 1
5.22m [17'-2"] x 2.78m [9'-1"]

Bedroom 2
2.81m [9'-3"] x 2.68m [8'-9"]

Bedroom 3
3.83m [12'-7"] x 2.15m [7'-1"]



Backed by
HM Government

www.yourvividhome.co.uk
@WeAreVIVIDsales

VIVID

Please note floorplans are not to scale and are indicative only, total areas are provided as gross internal areas and are subject to variance and these plans do not act as part of a legally binding contract, warranty or guarantee. These plans may not be to scale and dimensions may vary during the build programme. It is common for fixtures and fittings to change during the build programme, for example boilers. Location of windows, doors, kitchen units and appliances may differ. Doors may swing in to the opposite direction to that shown on selected houses. Dimensions, which are taken from the indicated points of measurement are for guidance only and are not intended to be used to calculate the space needed for specific pieces of furniture. If your home is set within a terrace row, the position of the windows may vary from those shown on this plan. The property may also be a handed (mirrored) version of the layout shown here. We advise that you do not order any furniture based on these indicative plans, please wait until you can measure up fully, inside the property. Please speak to a member of our sales team about when you can gain access to take measurements. We will not be responsible for costs incurred due to ordering incorrect furniture. VIVID Housing Limited is registered in England and Wales as a registered society under the Co-operative and Community Benefit Societies Act 2014 under number 7544 with exempt charity status and as a registered provider of social housing with the Homes and Communities Agency under number 4850. Our registered office is at Peninsular House, Wharf Road, Portsmouth, Hampshire, PO2 8HB. All information correct at time of creation – September 2021.

Huxley Court

New Alresford

Plot 36

2 Bedroom Apartment



SECOND FLOOR

Kitchen / Living / Dining Room
7.81m [25'-8"] x 4.47m [14'-8"]

Bedroom 1
5.78m [19'] x 2.75m [9']

Bedroom 2
3.70m [12'-2"] x 2.15m [7'-1"]



Backed by
HM Government

SECOND FLOOR

www.yourvividhome.co.uk
@WeAreVIVIDsales



Please note floorplans are not to scale and are indicative only, total areas are provided as gross internal areas and are subject to variance and these plans do not act as part of a legally binding contract, warranty or guarantee. These plans may not be to scale and dimensions may vary during the build programme. It is common for fixtures and fittings to change during the build programme, for example boilers. Location of windows, doors, kitchen units and appliances may differ. Doors may swing in to the opposite direction to that shown on selected houses. Dimensions, which are taken from the indicated points of measurement are for guidance only and are not intended to be used to calculate the space needed for specific pieces of furniture. If your home is set within a terrace row, the position of the windows may vary from those shown on this plan. The property may also be a handed (mirrored) version of the layout shown here. We advise that you do not order any furniture based on these indicative plans, please wait until you can measure up fully, inside the property. Please speak to a member of our sales team about when you can gain access to take measurements. We will not be responsible for costs incurred due to ordering incorrect furniture. VIVID Housing Limited is registered in England and Wales as a registered society under the Co-operative and Community Benefit Societies Act 2014 under number 7544 with exempt charity status and as a registered provider of social housing with the Homes and Communities Agency under number 4850. Our registered office is at Peninsular House, Wharf Road, Portsmouth, Hampshire, PO2 8HB. All information correct at time of creation – September 2021.

Huxley Court

New Alresford

Plot 37

3 Bedroom Apartment



SECOND FLOOR

Kitchen / Living / Dining Room
6.37m [20'-11"] x 4.63m [15'-2"]

Bedroom 1
5.22m [17'-2"] x 2.78m [9'-1"]

Bedroom 2
2.81m [9'-3"] x 2.68m [8'-9"]

Bedroom 3
3.83m [12'-7"] x 2.15m [7'-1"]



Backed by
HM Government

www.yourvividhome.co.uk
@WeAreVIVIDsales



Please note floorplans are not to scale and are indicative only, total areas are provided as gross internal areas and are subject to variance and these plans do not act as part of a legally binding contract, warranty or guarantee. These plans may not be to scale and dimensions may vary during the build programme. It is common for fixtures and fittings to change during the build programme, for example boilers. Location of windows, doors, kitchen units and appliances may differ. Doors may swing in to the opposite direction to that shown on selected houses. Dimensions, which are taken from the indicated points of measurement are for guidance only and are not intended to be used to calculate the space needed for specific pieces of furniture. If your home is set within a terrace row, the position of the windows may vary from those shown on this plan. The property may also be a handed (mirrored) version of the layout shown here. We advise that you do not order any furniture based on these indicative plans, please wait until you can measure up fully, inside the property. Please speak to a member of our sales team about when you can gain access to take measurements. We will not be responsible for costs incurred due to ordering incorrect furniture. VIVID Housing Limited is registered in England and Wales as a registered society under the Co-operative and Community Benefit Societies Act 2014 under number 7544 with exempt charity status and as a registered provider of social housing with the Homes and Communities Agency under number 4850. Our registered office is at Peninsular House, Wharf Road, Portsmouth, Hampshire, PO2 8HB. All information correct at time of creation – September 2021.

Huxley Court

New Alresford

Plots 29,30,31



GROUND FLOOR



Backed by
HM Government

www.yourvividhome.co.uk
@WeAreVIVIDsales



Please note floorplans are not to scale and are indicative only, total areas are provided as gross internal areas and are subject to variance and these plans do not act as part of a legally binding contract, warranty or guarantee. These plans may not be to scale and dimensions may vary during the build programme. It is common for fixtures and fittings to change during the build programme, for example boilers. Location of windows, doors, kitchen units and appliances may differ. Doors may swing in to the opposite direction to that shown on selected houses. Dimensions, which are taken from the indicated points of measurement are for guidance only and are not intended to be used to calculate the space needed for specific pieces of furniture. If your home is set within a terrace row, the position of the windows may vary from those shown on this plan. The property may also be a handed (mirrored) version of the layout shown here. We advise that you do not order any furniture based on these indicative plans, please wait until you can measure up fully, inside the property. Please speak to a member of our sales team about when you can gain access to take measurements. We will not be responsible for costs incurred due to ordering incorrect furniture. VIVID Housing Limited is registered in England and Wales as a registered society under the Co-operative and Community Benefit Societies Act 2014 under number 7544 with exempt charity status and as a registered provider of social housing with the Homes and Communities Agency under number 4850. Our registered office is at Peninsular House, Wharf Road, Portsmouth, Hampshire, PO2 8HB. All information correct at time of creation – September 2021.

Huxley Court

New Alresford

Plots 32,33,34



Backed by
HM Government

www.yourvividhome.co.uk
@WeAreVIVIDsales

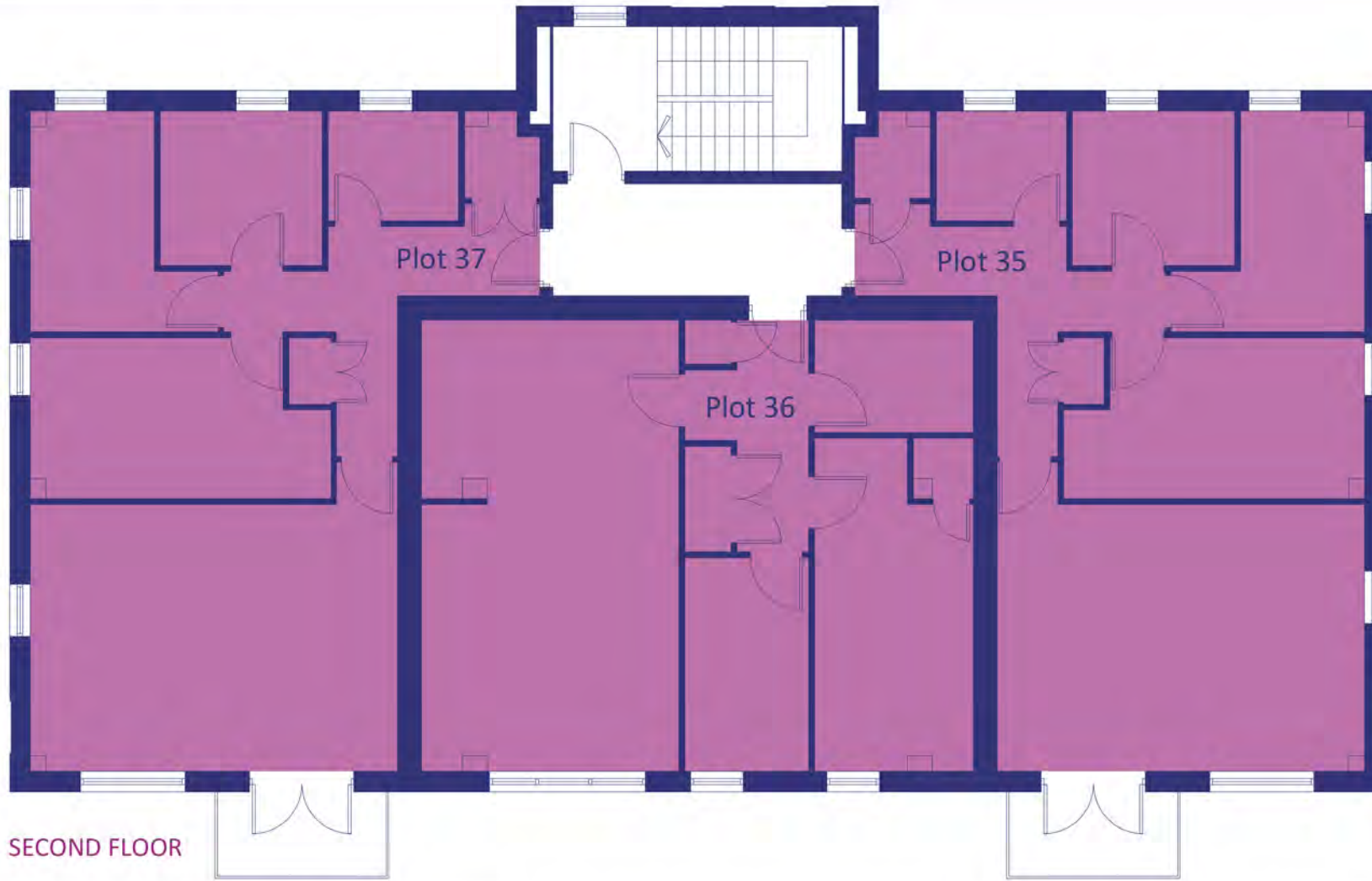


Please note floorplans are not to scale and are indicative only, total areas are provided as gross internal areas and are subject to variance and these plans do not act as part of a legally binding contract, warranty or guarantee. These plans may not be to scale and dimensions may vary during the build programme. It is common for fixtures and fittings to change during the build programme, for example boilers. Location of windows, doors, kitchen units and appliances may differ. Doors may swing in to the opposite direction to that shown on selected houses. Dimensions, which are taken from the indicated points of measurement are for guidance only and are not intended to be used to calculate the space needed for specific pieces of furniture. If your home is set within a terrace row, the position of the windows may vary from those shown on this plan. The property may also be a handed (mirrored) version of the layout shown here. We advise that you do not order any furniture based on these indicative plans, please wait until you can measure up fully, inside the property. Please speak to a member of our sales team about when you can gain access to take measurements. We will not be responsible for costs incurred due to ordering incorrect furniture. VIVID Housing Limited is registered in England and Wales as a registered society under the Co-operative and Community Benefit Societies Act 2014 under number 7544 with exempt charity status and as a registered provider of social housing with the Homes and Communities Agency under number 4850. Our registered office is at Peninsular House, Wharf Road, Portsmouth, Hampshire, PO2 8HB. All information correct at time of creation – September 2021.

Huxley Court

New Alresford

Plots 35,36,37



Backed by
HM Government

www.yourvividhome.co.uk
[@WeAreVIVIDsales](https://twitter.com/WeAreVIVIDsales)



Please note floorplans are not to scale and are indicative only, total areas are provided as gross internal areas and are subject to variance and these plans do not act as part of a legally binding contract, warranty or guarantee. These plans may not be to scale and dimensions may vary during the build programme. It is common for fixtures and fittings to change during the build programme, for example boilers. Location of windows, doors, kitchen units and appliances may differ. Doors may swing in to the opposite direction to that shown on selected houses. Dimensions, which are taken from the indicated points of measurement are for guidance only and are not intended to be used to calculate the space needed for specific pieces of furniture. If your home is set within a terrace row, the position of the windows may vary from those shown on this plan. The property may also be a handed (mirrored) version of the layout shown here. We advise that you do not order any furniture based on these indicative plans, please wait until you can measure up fully, inside the property. Please speak to a member of our sales team about when you can gain access to take measurements. We will not be responsible for costs incurred due to ordering incorrect furniture. VIVID Housing Limited is registered in England and Wales as a registered society under the Co-operative and Community Benefit Societies Act 2014 under number 7544 with exempt charity status and as a registered provider of social housing with the Homes and Communities Agency under number 4850. Our registered office is at Peninsular House, Wharf Road, Portsmouth, Hampshire, PO2 8HB. All information correct at time of creation – September 2021.

Huxley Court

New Alresford

Plots 29-37



EAST ELEVATION



NORTH ELEVATION



WEST ELEVATION



SOUTH ELEVATION



Backed by
HM Government

www.yourvividhome.co.uk
@WeAreVIVIDsales



Please note floorplans are not to scale and are indicative only, total areas are provided as gross internal areas and are subject to variance and these plans do not act as part of a legally binding contract, warranty or guarantee. These plans may not be to scale and dimensions may vary during the build programme. It is common for fixtures and fittings to change during the build programme, for example boilers. Location of windows, doors, kitchen units and appliances may differ. Doors may swing in to the opposite direction to that shown on selected houses. Dimensions, which are taken from the indicated points of measurement are for guidance only and are not intended to be used to calculate the space needed for specific pieces of furniture. If your home is set within a terrace row, the position of the windows may vary from those shown on this plan. The property may also be a handed (mirrored) version of the layout shown here. We advise that you do not order any furniture based on these indicative plans, please wait until you can measure up fully, inside the property. Please speak to a member of our sales team about when you can gain access to take measurements. We will not be responsible for costs incurred due to ordering incorrect furniture. VIVID Housing Limited is registered in England and Wales as a registered society under the Co-operative and Community Benefit Societies Act 2014 under number 7544 with exempt charity status and as a registered provider of social housing with the Homes and Communities Agency under number 4850. Our registered office is at Peninsular House, Wharf Road, Portsmouth, Hampshire, PO2 8HB. All information correct at time of creation – September 2021.

Huxley Court

New Alresford

Plot 38

2 Bedroom Apartment



GROUND FLOOR

Kitchen / Living / Dining Room
7.03m [23'-1"] x 5.13m [16'-10"]

Bedroom 1
5.13m [16'-10"] x 2.75m [9']

Bedroom 2
4.81m [15'-9"] x 2.88m [9'-5"]



Backed by
HM Government

www.yourvividhome.co.uk
@WeAreVIVIDsales



Please note floorplans are not to scale and are indicative only, total areas are provided as gross internal areas and are subject to variance and these plans do not act as part of a legally binding contract, warranty or guarantee. These plans may not be to scale and dimensions may vary during the build programme. It is common for fixtures and fittings to change during the build programme, for example boilers. Location of windows, doors, kitchen units and appliances may differ. Doors may swing in to the opposite direction to that shown on selected houses. Dimensions, which are taken from the indicated points of measurement are for guidance only and are not intended to be used to calculate the space needed for specific pieces of furniture. If your home is set within a terrace row, the position of the windows may vary from those shown on this plan. The property may also be a handed (mirrored) version of the layout shown here. We advise that you do not order any furniture based on these indicative plans, please wait until you can measure up fully, inside the property. Please speak to a member of our sales team about when you can gain access to take measurements. We will not be responsible for costs incurred due to ordering incorrect furniture. VIVID Housing Limited is registered in England and Wales as a registered society under the Co-operative and Community Benefit Societies Act 2014 under number 7544 with exempt charity status and as a registered provider of social housing with the Homes and Communities Agency under number 4850. Our registered office is at Peninsular House, Wharf Road, Portsmouth, Hampshire, PO2 8HB. All information correct at time of creation – September 2021.

Huxley Court

New Alresford

Plot 39

2 Bedroom Apartment



GROUND FLOOR

GROUND FLOOR

Kitchen / Living / Dining Room
6.15m [20'-2"] x 4.83m [15'-10"]

Bedroom 1
4.96m [16'-3"] x 2.81m [9'-2"]

Bedroom 2
4.23m [13'-10"] x 3.15m [10'-4"]



Backed by
HM Government

www.yourvividhome.co.uk
@WeAreVIVIDsales



Please note floorplans are not to scale and are indicative only, total areas are provided as gross internal areas and are subject to variance and these plans do not act as part of a legally binding contract, warranty or guarantee. These plans may not be to scale and dimensions may vary during the build programme. It is common for fixtures and fittings to change during the build programme, for example boilers. Location of windows, doors, kitchen units and appliances may differ. Doors may swing in to the opposite direction to that shown on selected houses. Dimensions, which are taken from the indicated points of measurement are for guidance only and are not intended to be used to calculate the space needed for specific pieces of furniture. If your home is set within a terrace row, the position of the windows may vary from those shown on this plan. The property may also be a handed (mirrored) version of the layout shown here. We advise that you do not order any furniture based on these indicative plans, please wait until you can measure up fully, inside the property. Please speak to a member of our sales team about when you can gain access to take measurements. We will not be responsible for costs incurred due to ordering incorrect furniture. VIVID Housing Limited is registered in England and Wales as a registered society under the Co-operative and Community Benefit Societies Act 2014 under number 7544 with exempt charity status and as a registered provider of social housing with the Homes and Communities Agency under number 4850. Our registered office is at Peninsular House, Wharf Road, Portsmouth, Hampshire, PO2 8HB. All information correct at time of creation – September 2021.

Huxley Court

New Alresford

Plot 40
2 Bedroom Apartment



FIRST FLOOR

FIRST FLOOR

Kitchen / Living / Dining Room
7.03m [23'-1"] x 5.13m [16'-10"]

Bedroom 1
5.13m [16'-10"] x 2.75m [9']

Bedroom 2
4.81m [15'-9"] x 2.88m [9'-5"]



Backed by
HM Government

www.yourvividhome.co.uk
@WeAreVIVIDsales



Please note floorplans are not to scale and are indicative only, total areas are provided as gross internal areas and are subject to variance and these plans do not act as part of a legally binding contract, warranty or guarantee. These plans may not be to scale and dimensions may vary during the build programme. It is common for fixtures and fittings to change during the build programme, for example boilers. Location of windows, doors, kitchen units and appliances may differ. Doors may swing in to the opposite direction to that shown on selected houses. Dimensions, which are taken from the indicated points of measurement are for guidance only and are not intended to be used to calculate the space needed for specific pieces of furniture. If your home is set within a terrace row, the position of the windows may vary from those shown on this plan. The property may also be a handed (mirrored) version of the layout shown here. We advise that you do not order any furniture based on these indicative plans, please wait until you can measure up fully, inside the property. Please speak to a member of our sales team about when you can gain access to take measurements. We will not be responsible for costs incurred due to ordering incorrect furniture. VIVID Housing Limited is registered in England and Wales as a registered society under the Co-operative and Community Benefit Societies Act 2014 under number 7544 with exempt charity status and as a registered provider of social housing with the Homes and Communities Agency under number 4850. Our registered office is at Peninsular House, Wharf Road, Portsmouth, Hampshire, PO2 8HB. All information correct at time of creation – September 2021.

Huxley Court

New Alresford

Plot 41

2 Bedroom Apartment



FIRST FLOOR

Kitchen / Living / Dining Room
6.15m [20'-2"] x 4.83m [15'-10"]

Bedroom 1
4.96m [16'-3"] x 2.81m [9'-2"]

Bedroom 2
4.23m [13'-10"] x 3.15m [10'-4"]



Backed by
HM Government

www.yourvividhome.co.uk
@WeAreVIVIDsales

VIVID

Please note floorplans are not to scale and are indicative only, total areas are provided as gross internal areas and are subject to variance and these plans do not act as part of a legally binding contract, warranty or guarantee. These plans may not be to scale and dimensions may vary during the build programme. It is common for fixtures and fittings to change during the build programme, for example boilers. Location of windows, doors, kitchen units and appliances may differ. Doors may swing in to the opposite direction to that shown on selected houses. Dimensions, which are taken from the indicated points of measurement are for guidance only and are not intended to be used to calculate the space needed for specific pieces of furniture. If your home is set within a terrace row, the position of the windows may vary from those shown on this plan. The property may also be a handed (mirrored) version of the layout shown here. We advise that you do not order any furniture based on these indicative plans, please wait until you can measure up fully, inside the property. Please speak to a member of our sales team about when you can gain access to take measurements. We will not be responsible for costs incurred due to ordering incorrect furniture. VIVID Housing Limited is registered in England and Wales as a registered society under the Co-operative and Community Benefit Societies Act 2014 under number 7544 with exempt charity status and as a registered provider of social housing with the Homes and Communities Agency under number 4850. Our registered office is at Peninsular House, Wharf Road, Portsmouth, Hampshire, PO2 8HB. All information correct at time of creation – September 2021.

Huxley Court

New Alresford

Plot 43

2 Bedroom Apartment



GROUND FLOOR

Kitchen / Living / Dining Room
6.15m [20'-2"] x 4.62m [15'-2"]

Bedroom 1
4.96m [16'-3"] x 2.80m [9'-2"]

Bedroom 2
4.02m [13'-2"] x 3.15m [10'-4"]



Backed by
HM Government

www.yourvividhome.co.uk
@WeAreVIVIDsales

VIVID

Please note floorplans are not to scale and are indicative only, total areas are provided as gross internal areas and are subject to variance and these plans do not act as part of a legally binding contract, warranty or guarantee. These plans may not be to scale and dimensions may vary during the build programme. It is common for fixtures and fittings to change during the build programme, for example boilers. Location of windows, doors, kitchen units and appliances may differ. Doors may swing in to the opposite direction to that shown on selected houses. Dimensions, which are taken from the indicated points of measurement are for guidance only and are not intended to be used to calculate the space needed for specific pieces of furniture. If your home is set within a terrace row, the position of the windows may vary from those shown on this plan. The property may also be a handed (mirrored) version of the layout shown here. We advise that you do not order any furniture based on these indicative plans, please wait until you can measure up fully, inside the property. Please speak to a member of our sales team about when you can gain access to take measurements. We will not be responsible for costs incurred due to ordering incorrect furniture. VIVID Housing Limited is registered in England and Wales as a registered society under the Co-operative and Community Benefit Societies Act 2014 under number 7544 with exempt charity status and as a registered provider of social housing with the Homes and Communities Agency under number 4850. Our registered office is at Peninsular House, Wharf Road, Portsmouth, Hampshire, PO2 8HB. All information correct at time of creation – September 2021.

Huxley Court

New Alresford

Plot 44

2 Bedroom Apartment



FIRST FLOOR

FIRST FLOOR

Kitchen / Living / Dining Room
7.41m [24'-4"] x 5.61m [18'-5"]

Bedroom 1
5.13m [16'-10"] x 2.75m [9']

Bedroom 2
3.70m [12'-2"] x 2.68m [8'-9"]



Backed by
HM Government

www.yourvividhome.co.uk
@WeAreVIVIDsales



Please note floorplans are not to scale and are indicative only, total areas are provided as gross internal areas and are subject to variance and these plans do not act as part of a legally binding contract, warranty or guarantee. These plans may not be to scale and dimensions may vary during the build programme. It is common for fixtures and fittings to change during the build programme, for example boilers. Location of windows, doors, kitchen units and appliances may differ. Doors may swing in to the opposite direction to that shown on selected houses. Dimensions, which are taken from the indicated points of measurement are for guidance only and are not intended to be used to calculate the space needed for specific pieces of furniture. If your home is set within a terrace row, the position of the windows may vary from those shown on this plan. The property may also be a handed (mirrored) version of the layout shown here. We advise that you do not order any furniture based on these indicative plans, please wait until you can measure up fully, inside the property. Please speak to a member of our sales team about when you can gain access to take measurements. We will not be responsible for costs incurred due to ordering incorrect furniture. VIVID Housing Limited is registered in England and Wales as a registered society under the Co-operative and Community Benefit Societies Act 2014 under number 7544 with exempt charity status and as a registered provider of social housing with the Homes and Communities Agency under number 4850. Our registered office is at Peninsular House, Wharf Road, Portsmouth, Hampshire, PO2 8HB. All information correct at time of creation – September 2021.

Huxley Court

New Alresford

Plot 45
2 Bedroom Apartment



FIRST FLOOR

Kitchen / Living / Dining Room
6.15m [20'-2"] x 4.62m [15'-2"]

Bedroom 1
4.96m [16'-3"] x 2.80m [9'-2"]

Bedroom 2
4.02m [13'-2"] x 3.15m [10'-4"]



Backed by
HM Government

www.yourvividhome.co.uk
@WeAreVIVIDsales

VIVID

Please note floorplans are not to scale and are indicative only, total areas are provided as gross internal areas and are subject to variance and these plans do not act as part of a legally binding contract, warranty or guarantee. These plans may not be to scale and dimensions may vary during the build programme. It is common for fixtures and fittings to change during the build programme, for example boilers. Location of windows, doors, kitchen units and appliances may differ. Doors may swing in to the opposite direction to that shown on selected houses. Dimensions, which are taken from the indicated points of measurement are for guidance only and are not intended to be used to calculate the space needed for specific pieces of furniture. If your home is set within a terrace row, the position of the windows may vary from those shown on this plan. The property may also be a handed (mirrored) version of the layout shown here. We advise that you do not order any furniture based on these indicative plans, please wait until you can measure up fully, inside the property. Please speak to a member of our sales team about when you can gain access to take measurements. We will not be responsible for costs incurred due to ordering incorrect furniture. VIVID Housing Limited is registered in England and Wales as a registered society under the Co-operative and Community Benefit Societies Act 2014 under number 7544 with exempt charity status and as a registered provider of social housing with the Homes and Communities Agency under number 4850. Our registered office is at Peninsular House, Wharf Road, Portsmouth, Hampshire, PO2 8HB. All information correct at time of creation – September 2021.

Huxley Court

New Alresford

Plots 38,39,42,43



Backed by
HM Government

www.yourvividhome.co.uk
@WeAreVIVIDsales



Please note floorplans are not to scale and are indicative only, total areas are provided as gross internal areas and are subject to variance and these plans do not act as part of a legally binding contract, warranty or guarantee. These plans may not be to scale and dimensions may vary during the build programme. It is common for fixtures and fittings to change during the build programme, for example boilers. Location of windows, doors, kitchen units and appliances may differ. Doors may swing in to the opposite direction to that shown on selected houses. Dimensions, which are taken from the indicated points of measurement are for guidance only and are not intended to be used to calculate the space needed for specific pieces of furniture. If your home is set within a terrace row, the position of the windows may vary from those shown on this plan. The property may also be a handed (mirrored) version of the layout shown here. We advise that you do not order any furniture based on these indicative plans, please wait until you can measure up fully, inside the property. Please speak to a member of our sales team about when you can gain access to take measurements. We will not be responsible for costs incurred due to ordering incorrect furniture. VIVID Housing Limited is registered in England and Wales as a registered society under the Co-operative and Community Benefit Societies Act 2014 under number 7544 with exempt charity status and as a registered provider of social housing with the Homes and Communities Agency under number 4850. Our registered office is at Peninsular House, Wharf Road, Portsmouth, Hampshire, PO2 8HB. All information correct at time of creation – September 2021.

Huxley Court

New Alresford

Plots 40,41,44,45



FIRST FLOOR



Backed by
HM Government

www.yourvividhome.co.uk
@WeAreVIVIDsales



Please note floorplans are not to scale and are indicative only, total areas are provided as gross internal areas and are subject to variance and these plans do not act as part of a legally binding contract, warranty or guarantee. These plans may not be to scale and dimensions may vary during the build programme. It is common for fixtures and fittings to change during the build programme, for example boilers. Location of windows, doors, kitchen units and appliances may differ. Doors may swing in to the opposite direction to that shown on selected houses. Dimensions, which are taken from the indicated points of measurement are for guidance only and are not intended to be used to calculate the space needed for specific pieces of furniture. If your home is set within a terrace row, the position of the windows may vary from those shown on this plan. The property may also be a handed (mirrored) version of the layout shown here. We advise that you do not order any furniture based on these indicative plans, please wait until you can measure up fully, inside the property. Please speak to a member of our sales team about when you can gain access to take measurements. We will not be responsible for costs incurred due to ordering incorrect furniture. VIVID Housing Limited is registered in England and Wales as a registered society under the Co-operative and Community Benefit Societies Act 2014 under number 7544 with exempt charity status and as a registered provider of social housing with the Homes and Communities Agency under number 4850. Our registered office is at Peninsular House, Wharf Road, Portsmouth, Hampshire, PO2 8HB. All information correct at time of creation – September 2021.

Huxley Court

New Alresford

Plots 38-45



EAST ELEVATION



NORTH ELEVATION



WEST ELEVATION



SOUTH ELEVATION



Backed by
HM Government

www.yourvividhome.co.uk
@WeAreVIVIDsales

Please note floorplans are not to scale and are indicative only, total areas are provided as gross internal areas and are subject to variance and these plans do not act as part of a legally binding contract, warranty or guarantee. These plans may not be to scale and dimensions may vary during the build programme. It is common for fixtures and fittings to change during the build programme, for example boilers. Location of windows, doors, kitchen units and appliances may differ. Doors may swing in to the opposite direction to that shown on selected houses. Dimensions, which are taken from the indicated points of measurement are for guidance only and are not intended to be used to calculate the space needed for specific pieces of furniture. If your home is set within a terrace row, the position of the windows may vary from those shown on this plan. The property may also be a handed (mirrored) version of the layout shown here. We advise that you do not order any furniture based on these indicative plans, please wait until you can measure up fully, inside the property. Please speak to a member of our sales team about when you can gain access to take measurements. We will not be responsible for costs incurred due to ordering incorrect furniture. VIVID Housing Limited is registered in England and Wales as a registered society under the Co-operative and Community Benefit Societies Act 2014 under number 7544 with exempt charity status and as a registered provider of social housing with the Homes and Communities Agency under number 4850. Our registered office is at Peninsular House, Wharf Road, Portsmouth, Hampshire, PO2 8HB. All information correct at time of creation – September 2021.



Huxley Court

New Alresford



Backed by
HM Government

www.yourvividhome.co.uk
[@WeAreVIVIDsales](https://twitter.com/WeAreVIVIDsales)



Please note floorplans are not to scale and are indicative only, total areas are provided as gross internal areas and are subject to variance and these plans do not act as part of a legally binding contract, warranty or guarantee. These plans may not be to scale and dimensions may vary during the build programme. It is common for fixtures and fittings to change during the build programme, for example boilers. Location of windows, doors, kitchen units and appliances may differ. Doors may swing in to the opposite direction to that shown on selected houses. Dimensions, which are taken from the indicated points of measurement are for guidance only and are not intended to be used to calculate the space needed for specific pieces of furniture. If your home is set within a terrace row, the position of the windows may vary from those shown on this plan. The property may also be a handed (mirrored) version of the layout shown here. We advise that you do not order any furniture based on these indicative plans, please wait until you can measure up fully, inside the property. Please speak to a member of our sales team about when you can gain access to take measurements. We will not be responsible for costs incurred due to ordering incorrect furniture. VIVID Housing Limited is registered in England and Wales as a registered society under the Co-operative and Community Benefit Societies Act 2014 under number 7544 with exempt charity status and as a registered provider of social housing with the Homes and Communities Agency under number 4850. Our registered office is at Peninsular House, Wharf Road, Portsmouth, Hampshire, PO2 8HB. All information correct at time of creation – September 2021.